



Faux Finishing: Wood Graining

From Truevalue.com

Wood graining is a centuries-old painting technique used to simulate the appearance of wood. This dramatic technique is easily applied to doors, as we will explain in this project, but it can also be used on painted furniture or interior trim molding.

Materials Checklist

- Cheesecloth
 - Paper towels
 - 3-in. paint brush
 - Paint pail
 - Rubber graining comb
 - Rubber gloves
 - Painter's tape
- Zinsser Products:**
Blend and Glaze
Bulls Eye Shellac



Tip: Glaze Each Section Separately

Each section must be glazed separately, starting with the panel sections, then horizontal rails, and then the vertical stiles. If you are glazing some other surface, use these instructions as a helpful guide.

Step 1: Mask Off Sections

Mask off the sections you're not working on.

Step 2: Apply Glaze

Apply glaze to a panel section. Brush out evenly so that no voids or large drips appear. Allow glaze to set for a minute. Be sure to use small dry brushes to detail small area such as the molding around the inset door window so the wood grain is continuous for the length of each area.

Step 3: Use Comb for Wood-Graining Technique

Starting with one panel, make several gentle arcs with the graining comb. Then drag the comb vertically through the panel to create a moiré (wavy) effect. Complete the entire section in the same manner. Proceed to the next panel section and repeat the process.

Step 4: Drag Comb in Opposite Direction

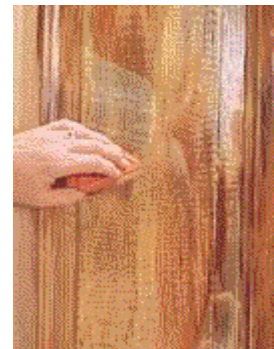
Remove tape to expose horizontal rails. Apply the glaze. Drag the comb at a slightly offset angle, 11 o'clock or 1 o'clock. Then drag the comb horizontally across the rails. Repeat for all rails. For more interest, vary the techniques so that the grain does not run perfectly parallel to adjacent area. Slight differences in technique and shading can add interest and drama.

Step 5: Drag Comb with Cheesecloth

Remove tape to expose vertical stiles. Apply the glaze. Drape a piece of clean cheesecloth over the teeth of the comb and drag it vertically through the stile at a slightly offset angle. Remove the cheesecloth and drag the fine teeth of the comb vertically through the stile. Repeat for all stiles.

Step 6: Protect your Creation

Apply a topcoat of clear finish.



Step 3



Step 5